



ANTHROPOLOGY
CAREER READINESS
NETWORK

Can do, can't do, and can't do without!

Consider these characteristics surrounding work

You know yourself best! How do you decide if a job is right for you?



Your Ideal Work Environment

Type of Employment

- Steady with Benefits
 - Full-time hourly
 - Salary
- Intermittent
 - Contract/Project/Seasonal
 - Self-employed

Type of Work

- Managed by a supervisor
- Collaborative/Team-based
- Self-directed

Work Orientation

- Internal-facing (e.g., employees)
- External-facing (Varies by industry and can include)
 - Clients and customers
 - Vendors and suppliers
 - Government constituents
 - Community members and stakeholders
 - Scientific peers

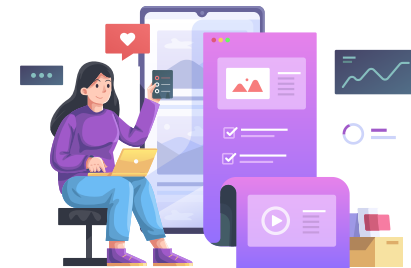
Work Hours

- Fixed Schedule
- Flexible Schedule
- Rotating Schedule
- Evenings/Weekends
- On-call hours
- Paid time off (PTO), Sick days, holidays



Work Location

- Office
- Remote (e.g., from home)
- On the Road (e.g., consulting)
- In the Field (e.g., for a project)
- Hybrid



Workstation

- Private Office Space/Cubicle
- Ambient Noise/Activity
- Immediate Access to Work Materials and Equipment
- Sitting/Standing
- Lighting

